

# The Market Report

## Thrapston Forthcoming Events

**Thursday 24th August**

Prime & Cull Sheep

**Friday 25th August**

Thrapston Collective Machinery Sale

**Saturday 26th August**

Store & Breeding Cattle, Sheep & Pigs

Tack Sale - 1pm

**Thursday 31st August**

Prime & Cull Sheep

**Saturday 2nd September**

Store & Breeding Cattle, Sheep & Pigs

Smallholders Sale

*For further information on any of the sales  
please contact a member of the Market Team*

**Agricultural & Development Consultants, Chartered Surveyors, Auctioneers & Estate Agents**

Oakleigh House, Thrapston,  
Northamptonshire NN14 4LJ

Alastair Brown: 07885 804450  
Jake Wagstaff: 07487 526803

CPH: 29/242/8000 NN14 4JU  
CPH: 43/266/8000 CV37 8LP

Bletsoes is the trading name of Henry H Bletsoe & Son LLP, a Limited Liability Partnership registered in England & Wales under Partnership Number OC371369. Regulated by RICS. Registered office: Oakleigh House, Thrapston, Northamptonshire NN14 4LJ. We use the term 'partner' to refer to a member of the LLP or an employee or consultant with equivalent standing and qualifications.



## REPORT FOR THURSDAY 17TH AUGUST

### 539 Prime Lambs

A strong showing of meat forward this week with farmers realising the benefits of weight and meat. This week's average did not meet the same spike as last week but kept in line with the rest of the country. SQQ 257.03p/kg. SK Grace topped the day with a sterling show of light Beltex lambs at 292p/kg while CJ White topped the day with tremendous 57kg Texels reaching £156.

**Highlights** - SJ Hubbard topped their run with a best end draw of power seeing 50kgs Texels top to £137 with more at £135, while their 54.5kgs flew up to £146; AJ Geary saw a smart trade with their heavy lambs Blue Texel crosses at 58.5kgs to £147 and 50kgs to £134; JEJ Harrison saw another run of best meat Lleyms with 51kgs to £136; WF Knight & Son continue to draw quality seeing their Continentals at 49.5kgs top at £134 with 47.5kgs at £128.50 and 45kgs to £123; JI & JA Claypole topped the lighter lambs with Cheviot Texels at 45kgs to £124.

To		From		Average	
Standards (32.1-39kg)					
292p	£114.00	243p	£85.00	265.9p	£99.36
Mediums (39.1 - 45.5kg)					
282p	£124.00	238p	£100.00	256.8p	£111.04
Heavies (45.6 - 52kg)					
274p	£137.00	239p	£110.00	261.8p	£125.50
Over 52kg					
274p	£156.00	251p	£136.50	262.8p	£143.32

### 82 Cull Ewes & Rams

Trade remains constant, with lean meat looking the dearest sold. All in average saw £88.46. DJ & AL Underwood topped the day with Texel Mule ewes to £118; M Burke saw the best trade with lean meat Charollais ewes to £115.50; JEJ Harrison saw a smart run of Lleyms top to £110 for heavier ewes with leaner types to £90 and £70; George Thompson Farms saw a thick pen of Continental crosses to £108; JE Beesley & Son saw the trade of the day with Mule ewes to £102 for the biggest frames. Lean meat types were seen from £80 to £90 with true feeders at £45 plus.

To	From	Average
£118.00	£45.00	£88.46

# Bletsoes

— EST. 1881 —

## Thrapston Breeding Sheep & Ram Sales

Entries are now being taken for the following sales

**Wednesday 13<sup>th</sup> September**

*Catalogue Entry Deadline – Monday 4<sup>th</sup> September*

**Saturday 14<sup>th</sup> October**

*Catalogue Entry Deadline – Wednesday 4<sup>th</sup> October*

Please contact us with your entries,  
for cataloguing & advertising purposes.

*Entry forms can be found online.*

[www.bletsoes.co.uk](http://www.bletsoes.co.uk)

## **REPORT FOR SATURDAY 19TH AUGUST**

### **Store & Breeding Cattle**

D Self sold three empty Limousin cows 10-14 years old which sold to £1260 from £1080, he also entered an 11 month Limousin Steer which sold to £1160 and a 20 month Limousin heifer selling to £915; AC Downing sold a 31 month British Blue heifer to £1010 and a 30 month British Friesian steer to £950. There seemed more demand this week, with a very good clearance for all present.

### **Store Pigs**

A great entry of pigs this weeks, plenty of interest at the moment for all types of swine which brought a lot of interest from afar. Prices topped at £124 for three Weaned pigs from J Mutters, a mixed entry of seventy-five from G Sayers sold to £81 and Fineseasons sold four pigs to £59.

### **Goats**

Two goats forward this week saw the Pygmy x Wethers sell to £45.

### **1155 Store & Breeding Sheep**

**488 Store Lambs** - An unbelievable trade with lambs looking to get dearer week on week, the numbers are continuing to draw new buyers for both short and long term lambs. Averaging £86.42. J Bland topped the day with a sterling show of Texels at £131 for forward condition; Webb Hatherley Livestock had their first annual draw of lambs with a strong showing of Texel Mules of big frames topping to £124, with the rest of the run at £101, £100, £99, £98 and £95; G Noton saw equal power with Charollais crosses to £124 for the best meat big frame lambs; D Stanley topped their run of Texels to £107; R Keeling saw the trade of the day for a smart pen of eighteen Beltex crosses selling to £106; RJ Garley continued with their recent consistency with Texels crosses to £100 through to £97, £97, £95 and £94; GK Doyle saw a smart run of well bred Texel and Cheviot crosses forward topping to £97 and £92; ATC Lepper & Son had their first draw of Charollais crosses with well grown pens of twenty selling to £94 and £93. Smaller frame, well bred lambs continue to sell in the high £80's with the dearest lambs by far the longest term in the mid £50's looking to be £20 up on the year.

**166 Feeding Ewes** - Another flyer off the back of the store lamb trade with many looking at feeding ewes as an alternative, prices ranged from £30 to £150 with an average of £82.65. D Stanley topped the day at £150 for smart lean meat Texel ewes with lesser shape same quality at £122; HH Marten topped with monstrous Suffolk ewes to £131; Igguldon Farm saw a big run of quality with Texel ewes to £113 and £105, with their Zwartble crosses to £105 for three pens and £100 and

£88, £88; D Jerrams saw a good run of feeders with the biggest frame meat at £108 and true feeders to £80 and £67. The longest term, oldest ewes were around £50.

**520 Breeding Sheep** - A fantastic start to the Breeding Sales this season with theaves averaging a £174.54. **White Faced theaves** - MR Peter's & Son topped the day overall with a tremendous showing of Blue Texels reaching £270; T Sansom topped with another quality showing of Beltex crosses seeing their theaves top to £240 for two pens and Charollais Beltex to £255; RR Angood & Son topped their Texels Mules with well grown theaves to £205 and £190; JB Elkington saw a strong trade for their Logie Durno theaves seeing highs of £200 through to £180 and £180; L Blackman & Son saw their Cheviot Mules command the trade at £190, £185, £185 and £175. **Suffolk crosses** - L Blackman & Son topped the day at £210 with very powerful Scotch Half Bred cross Suffolks selling to £210; DM Walsh saw a best end trade for the well presented Suffolk Mules at £178 and £172; Pentelow Farms saw a high of £175 for their Suffolk crosses; Golden Valley Livestock topped their Suffolk Mules at £172 with followers at £165. **Mules** - CA Stubbs saw the best of the day with smart headed long theaves topping to £185; W Ellingworth & Sons saw a strong showing of well marked and grown theaves selling to £182 and £175 through to £170; Pentelow Farms saw a smart trade for well grown Mules with a high of £172.

### **Rams**

Perhaps a little early for some, but seemingly, many of the better rams have been reserved for buyers or sold already this season.

### ***MV's - Sold to £588 to average £442.75***

A mixed entry of quality and breeds. Prices topped for JH Grundy Farms with two Abertex Shearlings to £588; AMT Pinny sold a Texel Shearling to £567; Charollais sold to £546 for Woodview Farm Ltd; Suffolks sold to £378 for JH Grundy Farms and M Kellett sold Texel Ram Lambs to £360.

### ***Non-MV – Sold to £567 to average £360.23***

In this section an entry of mixed quality forward. Prices topped for two Texel Rams at £567 from CJ White; AJ Smith Farming sold Texels to £504; Folly Fields Farm Ltd sold a Charollais to £493.50; T Sansom sold a Charollais x Southdown to £430.50 and K Buckby sold a Blue Texel Shearling to £357.

### **NOTICE**

To ensure your entries are listed in the Saturday Store Sale Catalogue, please book in your stock by 4pm on Friday.



## SATURDAY 26TH AUGUST

### STORE & BREEDING CATTLE

#### D Self - TB4

1 Limousin Cow with Limousin Heifer Calf at Foot	10 Years & 6 Months
1 Limousin Cow with Limousin Heifer Calf at Foot	7 Years & 5 Months
1 Limousin Cow with Limousin Heifer Calf at Foot	6 Years & 4 Months
1 Limousin Cow with Limousin Heifer Calf at Foot	6 Years & 4 Months

#### S A C Holgate

38 Store Cattle	15-25 Months
-----------------	--------------

#### C E Hancock & Son

17 Store Cattle	17-27 Months
-----------------	--------------

#### R J Clark - TB4

5 Angus Heifers	24 Months
-----------------	-----------

### HORSES

#### Miss J Gibbs

**Malteaser** - Tricoloured Miniature Shetland yearling gelding. Passport and microchipped. Regularly wormed and foot trimmed. Lives in or out. Used to all farm machinery and happily lives with sheep and cattle. Good to catch, bath, groom, load. Has been well handled and shown in hand. Malteaser is friendly and has a cheeky personality. He is very intelligent and quick to learn. Malteaser is very good with all other horses and ponies, making him an excellent companion.

A further entry of six will be forward with more details available later in the week.

**To include** - A yearling spotted Colt. A 4 year old Blue and White ridden Shetland Gelding. A 2 year old Black Roan Filly. 2 x Gypsy Colt Foals. A 4 year old Bay Roan Gypsy Cob Mare.



### NOTICE

Please ensure Entry Forms and all relevant paperwork accompany your entries when bringing livestock into the Market.

Entry Forms can be found on our Website, in the Market Office or alternatively please contact the Main Office.

## **SATURDAY 2ND SEPTEMBER**

### **STORE & BREEDING SHEEP**

#### **J Wilkinson**

8 Pedigree Kerry Hill Ewe Lambs (Registered)  
4 Pedigree Soay Ewe Lambs (Registered)  
3 Soay Ram Lambs  
12 Grazing Ewes

#### **Performing Pets**

5 Feeding Ewes

### **GOATS**

#### **S L Fletcher**

1 Boer x Nanny with 2 Alpine Boer x Kids 4 Months

#### **Performing Pets**

4 Anglo Nubian Kids 6 Months  
1 Pygmy Nanny 2 Years

### **PIGS**

#### **Performing Pets**

3 Micro Piglets

### **DONKEYS**

#### **Performing Pets**

1 Gelding Donkey Miniature Cross 5 Years

## **NOTICE**

If you would like your stock to be included in the weekly report presale, please contact the office before 12 noon on Monday.

## **Thrapston Market Report 2023 Advertising Tariff**

### **Advertising Charges**

1/8 Page	£10 Per Week
1/4 Page	£20 Per Week
1/2 Page	£30 Per Week
Full Page	£50 Per Week
+ VAT	

### **Discounted Rates Available**

For further information, or to place and advert,  
please contact Beth Kitchener on 01832 732241 or [beth.kitchener@bletsoes.co.uk](mailto:beth.kitchener@bletsoes.co.uk)

## COLLECTIVE MACHINERY & EQUIPMENT SALE

Haldens Parkway, Thrapston

**Friday 25<sup>th</sup> August at 10.30am**

For Entry Forms please visit our website  
Or Contact the Main Office on 01832 732241

Important, entries must be returned by  
Tuesday 15<sup>th</sup> August to be included in the catalogue

Auctioneer in Charge: Alastair Brown 07885 804450



**Bletsoes**  
— EST. 1881 —

# An Auction



**Saturday 26<sup>th</sup> August at 1.00pm**

*At Thrapston Livestock Market*

Entries by Monday 14<sup>th</sup> August

**NO** entries will be accepted after this date

For further information contact Beth Kitchener

Agricultural & Development  
Consultants, Chartered Surveyors,  
Auctioneers & Estate Agents

[www.bletsoes.co.uk](http://www.bletsoes.co.uk)

01832 736757

**Catalogue Available Online Now**


# FORTHCOMING MACHINERY SALES



**Friday 15<sup>th</sup> September**  
Farm Dispersal Sale – Oundle, Northants

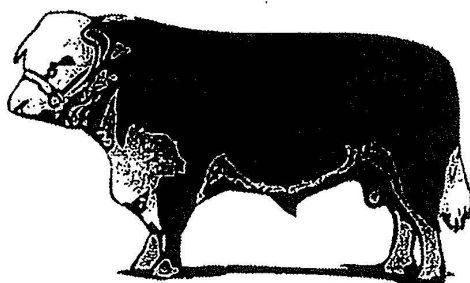


**Friday 20<sup>th</sup> October**  
Westlake Machinery Sale - Peterborough



*Further details coming soon*

# **BEDFORD LIVESTOCK SHOW SOCIETY**



## **Michaelmas Show Saturday 23rd September 2023 at Thrapston Market**

Please come along and support our Show  
Entries invited for Breeding, Finished & Store Animals  
Cattle, Sheep & Pig Sections

## **Dinner & Dance Friday 24th November 2023 at Bedford Blues Rugby Club 7pm for 7.30pm**

Presentation to Winners  
Cups, Trophies and Prize Money

**For Entries & Dinner Tickets please contact:**

William Saunders: 07711 089677  
Charles Tomkins: 07801 420747  
Bletsoes: 01832 732241

## ANIMAL HEALTH & WELFARE INFRASTRUCTURE GRANT - CALF HOUSING UPGRADES



Further funding has recently been made available to cattle farmers in England. The new £10 million Animal Health and Welfare Infrastructure Grant set out by DEFRA now allows cattle farmers with over 10 cattle to apply for a grant of between £15,000 and £500,000 to co-finance improvements to farm buildings used for calf housing.

The aim is that buildings built or upgraded under the grant will deliver health and welfare benefits for calves up to the age of 6 months. The grant can pay for the capital costs to build new, upgrade, or replace existing calf housing buildings such as:

- A-frame buildings with 4 walls
- Mono-pitch buildings with 3 walls and one open side
- Permanent open-sided structures with igloos or hutches
- Other types of building that do not fit the above categories.

In addition to this, farmers are also able to access funding for **roof top solar panels** on calf housing buildings providing both improved thermal insulation and lower energy costs for calf housing.

Before applying, you need to discuss your project with a vet and include a letter of confirmation in your full application. The building must be in situ for a minimum of 5 years.

Grants can cover up to a maximum rate of:

- 40% of the eligible costs of a project OR
- 25% if rooftop solar PV panels are included as part of your project.

You can claim the grant payment after the work is finished and has been paid for. The RPA have indicated that similar grants will become available in due course for adult cattle, pig and poultry housing.

If you would like to discuss this grant in greater detail, please speak to a member of the Agricultural Team on 01832 732241.

Our chaplain Rev. Eddie Smith, Church of England Minister, member of the Agricultural Chaplains Association and the Farming Community Network will be in attendance at the market on the 1st & 3rd Saturday each month for a chat, if you would like to talk.

[eddie.smith@talk21.com](mailto:eddie.smith@talk21.com)

## PETERBOROUGH CITY COUNCIL - NEW LOCAL PLAN

Peterborough City Council have started preparations for a full update to their Local Plan setting out how the city will grow over future decades. The new Local Plan will set out an overarching approach to development in Peterborough and aims to deliver on many of the issues facing the local area at present.

As part of the Local Plan Review, a Call for Sites exercise is taking place inviting landowners to submit sites of potential interest to these sectors, these include:

- Residential such as housing (market and affordable), specialist homes, self-builds, moorings etc.)
- Commercial (such as employment, retail, commercial leisure, logistics and distribution etc.)
- Infrastructure (such as education, health facilities, transport hubs, renewable energy etc.)
- Open space (such as sports and recreation parks, biodiversity gain, flood mitigation and travelling showpeople site)

The Call for Sites runs until 15<sup>th</sup> September 2023.

For sites to be included in the Local Plan they must be capable of delivering 10 or more dwellings or for sites of economic development and commercial sites, a size of 0.25 hectares (or 500 square metres of floor space). We will be submitting sites on behalf of landowners to this process, along with supporting information and if you should have any land which you feel should be promoted through this Local Plan Review then please contact a member of the Planning and Development Team and we will be happy to assist you.

## FOR SALE

Land off Deeping Road, Peakirk, Cambridgeshire

5.53 acres (2.23 hectares) of permanent pasture on the outskirts of Peakirk, near Peterborough, available for sale as a whole.

For further information please contact

Grace Millbank on 01832 732241  
or [grace.millbank@bletsoes.co.uk](mailto:grace.millbank@bletsoes.co.uk)





## CONSULTATION LAUNCHED INTO PERMITTED DEVELOPMENT RIGHTS

Following the speech by Housing and Levelling Up Secretary Michael Gove, a consultation has started on proposed amendments to permitted development rights (PDRs). This proposes amendments to various PDRs including those relating to:

- Agricultural diversification and development for the conversion of agricultural buildings to commercial (Class R) or residential (Class Q) use.
- The extension of both domestic and non-domestic buildings.

These proposed amendments include:

- Expanding PDRs to include other rural buildings (such as equestrian and forestry buildings) enabling diversification to commercial or residential uses.
- Converting derelict, unused or obsolete roadside barns to residential dwellings in designated areas and Article 2 land which includes conservation areas, AONBs, National Parks, the Broads and World Heritage Sites. It is important to note however that the Government report does already mention the inclusion of PDRs on Article 2 land for both commercial use and residential use, up to 10 dwellings.
- Accepting new housing developments in designated areas and article 2 land. Nothing has been mentioned regarding legislation enabling the building of new homes within article 2 land with the government report stressing the protection of greenfield sites and greenbelt.
- Allowing rear extensions and simplifying the floorspace restriction within Class Q PDRs.
- Increasing the maximum area of agricultural development such as new agricultural buildings to [1,500sqm](#) (for agricultural units of 5ha or more).

The Consultation runs until 25th September 2023 when it will be reviewed.

As part of the call for evidence for the consultation on PDRs, DEFRA is interested in understanding planning and any other issues associated with nature-based solutions, farm efficiency projects and the diversification of farm incomes beyond that covered by PDRs.

## CONSULTATION ON PLAN-MAKING

In addition to the launch of the consultation on PDRs, a consultation on plan-making has started. This consultation seeks views on proposals to implement the parts of the Levelling-Up and Regeneration Bill that relate specifically to plan-making.

Some of the proposals within this consultation are:

- A timeframe of [30 months](#) to prepare, examine and adopt new local plans.
- A single local plan for a district rather than multiple documents.
- New assessments through the plan-making process.
- Piloting of 'Community Land Auctions' to identify land for development that benefits local communities.
- Introduction of 'Supplementary Plans' to enable local authorities to react to change in their areas quickly.

The Consultation runs until 18th October 2023 when it will be reviewed.

# Bletsoes

— EST. 1881 —



## Oakhurst Farm Eye, Cambridgeshire

In all about 115 acres (46 hectares)  
For sale as a whole or in up to 5 lots

- 5 Bedroom Farmhouse and 4 Bedroom Barn Conversion
- Consent to convert farm buildings to create 3 dwellings
- 105.65 acres of Arable Land
- Environmental and Redevelopment Opportunities



[nicola.c-b@bletsoes.co.uk](mailto:nicola.c-b@bletsoes.co.uk)

[bletsoes.co.uk](https://bletsoes.co.uk)

01832 732241



# Bletsoes

— EST. 1881 —

## Land at Lower Farm Barnwell, Northamptonshire

In all about 197.68 acres (80 hectares)  
For sale as a whole

- Approximately 193.28 acres (78.22 ha) of Commercial Arable Land
- Spinney & Ponds Across Rolling Countryside
- Environmental Opportunities



[Chris.Templar@bletsoes.co.uk](mailto:Chris.Templar@bletsoes.co.uk)

[bletsoes.co.uk](http://bletsoes.co.uk)

01832 732241