

The Market Report

Professional Ponderings - August 2025

Looking back at the last 12 months, it does seem that farming has been quite challenging, with the wet autumn last year causing difficult drilling conditions, together with a very dry spring and summer now showing with harvest yields notably down. It is a similar story for livestock farmers where grass growth has been minimal, resulting in the need to feed livestock, cutting into already depleted winter stocks. The reduced straw yields will no doubt increase this problem, with winter fodder prices predicted to be high.

As is often the case in farming, there are exceptions and those people who had rain at the right time have fared better. The maize and early sown cover crops or Stewardship options seems to be either growing well, or struggling to get going.

Agency

We have had various properties on the market, from spring to date, and there seems to be plenty of interest for larger blocks of agricultural land, although there seems to be less interest for amenity and leisure land, potentially driven by the cost of bank borrowing. We are instructed to bring to the market arable land in the Thrapston area which will be launched shortly. Please do register your interest with the Agricultural Team.

We currently have on the market two blocks of land in Lincolnshire, Land at Kirton and Land at Holland Fen, and are inviting offers to be received by 12 noon on 14 August 2025.

Agricultural & Development Consultants, Chartered Surveyors, Auctioneers & Estate Agents

Oakleigh House, Thrapston,
Northamptonshire NN14 4LJ

Jake Wagstaff: 07487 526803

CPH: 29/242/8000 NN14 4JU
CPH: 43/266/8000 CV37 8LP

Bletsoes is the trading name of Henry H Bletsoe & Son LLP, a Limited Liability Partnership registered in England & Wales under Partnership Number OC371369. Regulated by RICS. Registered office: Oakleigh House, Thrapston, Northamptonshire NN14 4LJ. We use the term 'partner' to refer to a member of the LLP or an employee or consultant with equivalent standing and qualifications.



Bulldyke Farm, Hallaton, comprising of a five bedroom farmhouse set in 90.58 acres of grassland together with modern agricultural buildings, has been well received by the market and we hope to draw this sale to a conclusion in the coming weeks.

We also have two smaller lots in the Hallaton area for sale being a single grass field totalling 6.61 acres and a small area of woodland totalling 0.21 acres.

Redlands Farm, Stanwick, a modern five bedroom farmhouse with annex and agricultural buildings totalling 19,711 sq ft and in all approximately 40.37 acres, has just been launched to the market and is available as a Whole or in 2 Lots.

Riverside Meadow, Barnwell, totalling approximately 39.36 acres of grassland; along with 9.12 acres of arable Land at Thurleigh have both recently been placed on the market.

In addition, we have several commercial and development properties on the market.

If you are interested in any properties we have on the market, or have a property to sell, please do contact one of the Agricultural Team who will be pleased to assist you.

Agricultural Rents

Many arable land tenancies have a term date of 29 September, to coincide with the drilling season, and this often gives the opportunity for both Landlord and Tenant to review rents and serve Notices prior to the term date, if they wish to alter the rent in 12 months' time. We have been involved in the letting of several parcels of land which have produced varying rental offers, dependent on the prospective tenants' optimism in farming. If you would like assistance with rent reviews, then please do not hesitate to get in contact with a member of the Agricultural Team.

Unfortunately, on Friday 1 August, the government announced that the budget of £150 million for Countryside Stewardship Capital Grants had reached its limit and therefore no further applications can be submitted.

Finally, it was good to see a lot of familiar and new faces on our stand at Blakesley Show on Saturday with the agricultural community coming together to enjoy a day out during harvest supporting British Farming.

Gransden & District Agricultural Show takes place on Saturday 27 September which gives us another opportunity to invite you to join us for light refreshments on our stand. We look forward to seeing you then.

*George Pullin BSc (Hons) FAAV MRICS
Rural Chartered Surveyor*



Thrapston Forthcoming Events

Thursday 7th August

Prime & Cull Sheep

Saturday 9th August

Store & Breeding Cattle, Calves, Sheep & Pigs
Single Vendor Poultry Sale - 2pm
see main advert for further information

Thursday 14th August

Prime & Cull Sheep

Saturday 16th August

Store & Breeding Cattle, Calves, Sheep & Pigs
Thrapston Sale of Breeding Sheep & Rams
see main advert for further information

*For further information on any of the sales
Please contact a member of the Market Team*

FREE HEALTH ADVICE FOR FARMERS TO CONTINUE AT THRAPSTON MARKET

Parish Nursing Ministries UK will be offering health screening, information, and advice to farming families at Saturday markets. Their nurses will be based in the Bletsoes mobile unit, next to the market office.

The nurses will next be in attendance on Saturday 30th August 8.30am – 12.30pm. There is no need to book, just turn up and wait to be seen.

This free support can include • Blood pressure readings • Health discussions and advice on issues including joint/back pain and pain management, medication explanations, weight management, baby health issues, prostate concerns, restless leg syndrome, arthritis • Wellbeing discussions and advice on subjects including stress management, bereavement and dementia

REPORT FOR THURSDAY 31ST JULY

604 Prime Lambs

Averages look to be similar this week but comparably dearer on the week. Best end lambs continue to sell 350p/kg plus. Lighter lambs lifted on the week while over 44kgs continue to sell at clear premiums. SQQ 349.81p/kg. NP & MJ Russell topped the day at 381p/kg and CJ White topped overall at £200.

Highlights - JI & JA Claypole topped the lighter lambs with 39kg Cheviot crosses to £139; NP & MJ Russell topped the mid weights with 42kgs Texels to £160 or 381p/kg; HD & PJ Cranfield penned their usual stamp of Beltex crosses with 45kgs selling to £168, and 49kgs to £185 for the best end goods; R & M Arrowsmith penned a smart run of meat seeing 45kgs Texels to £165; DO Threadgold penned a sterling run of Texels at 42.5kgs full of meat selling to £161.50 and 52.5kgs to £194; Drivers Farms Ltd saw their best meat Texels to £199 for 56kgs, with their lighter lambs at 49kgs seeing similar highs to £185; CJ White topped their Texels at the overall highs of the day at £200 for 53kgs. Meat is key with far more highlights to be mentioned. Trade looks to be holding for weight and meat.

To		From		Average	
Standards (32.1-39kg)					
362p	£139.00	347p	£121.50	351.8p	£124.41
Mediums (39.1 - 45.5kg)					
381p	£168.00	332p	£136.00	349.8p	£148.47
Heavies (45.6 - 52kg)					
378p	£185.00	331p	£155.00	350.3p	£168.89
Over 52kg					
377p	£200.00	330p	£173.00	349.5p	£185.60

129 Cull Ewes & Rams

Another flyer this week with the trade needing to be seen to understood. Averaging £142.91. Weight and thick ewes sold very well, with the leaner ewes looking by far the best sold in the local area. JP Watts topped the day with best end Texel ewes to £204.50 with their followers at £181 and £174, their mules topped at £158 for meat; P & J Green saw the best of the trade with meat Mule crosses to £184, with Suffolks to £174 and £170.50; I Birden topped their ewes with Dutch Spotted at £181 and Cheviot crosses to £180 for lean meat. All meat, heavy ewes sold £130 plus, with leaner near grazing sorts at £125. True chancy feeders sold between £85 and £100.

To	From	Average
£204.50	£85.00	£142.91

Bletsoes

— EST. 1881 —

Saturday 9th August 2.00pm

at Thrapston Livestock Market

A Single Vendor Sale of Poultry

A selection of over 350 Birds - To Include

Bantams – Booted Bantams, Polish, Pekins, Silkies,
Seramas, Rose Combs & Indian Game

Large Fowl – Sussex, Cream Crested Legbars, Marans,
Araucana, Orpingtons, Brahmas & Faverolles

Hybrid Pullets – Warrens, Black Rocks, Legbar Crosses

Ducks – Runners, Cayuga, Aylesbury, Khaki Campbells, Call,
Mandarins, Hook Bills, Swedish Flower, Mini Appleyard & Muscovy

Peafowl – Indian Blues & Black Shoulders

Turkeys – Slate, Bronze & Bourbon Reds

Geese – Pomeranian, West of England, Embden, Chinese & Barnacle

Various Pheasants, Quail, Pigeons & Rheas

A full list of entries will be available online or sent by request



on behalf of Lincs Poultry & Waterfowl

Held in accordance with current APHA Rules

Agricultural & Development
Consultants, Chartered Surveyors,
Auctioneers & Estate Agents

www.bletsoes.co.uk

01832 736757

REPORT FOR SATURDAY 2ND AUGUST

Pigs - Auctioneer Jake Wagstaff

A buoyant trade with smallholders seeing a smart show of weaners forward. J & G Silk topped the day at £30 for White pigs with Tamworth crosses at the same trade; H Northway saw a flyer with Kune Kunes at £25.

Goats - Auctioneer Jake Wagstaff

A flyer for the right goods with S Shah seeing their Toggenburg cross Wethers selling to £186, £184, £172 and £160; T Purchon topped with Pygmy Nannies to £150; A Hubbard topped with their Boer crosses at £108. Young dairy cross Wethers sold between £31 and £35.

427 Store & Breeding Sheep - Auctioneer Jake Wagstaff

Another strong trade this week with all grades sold to top end prices, averaging £96.75. A Cook topped the day at £151.50 for Charollais lambs; P & K Chapman saw comparable highs with Dutch Spotted ram lambs to £150, £130 and £124; JA & MJ Kitchener topped their Texels to £136.50 and Suffolks to £134 a flyer for hopper lambs. All mid frame Continental bred lambs were £100 plus with part meat selling over £115. Smart bred but long term lambs sold in the £80's. Longest term and chancy sorts were £65 to £75. Ram lambs were £10 back on their mates.

Feeding Ewes - frame paid with an average of £95.12. C McDaid topped with well meated Continental crosses to £175 with Rylands to £145; JA & MJ Kitchener topped with their Jacobs to £128; C Bull saw Zwartbles to £127, £123 and £106. Small frame native ewes sold around £70 with Soays at £58 and £40.

Store Cattle & Breeding Cattle - Auctioneer Jake Wagstaff

A seasonal showing forward with trade on fire. Limousin steers at 14 months sold to £1750 with Angus at 19 months to £1330; Limousin heifers at 15 months saw £1485 and Aberdeen Angus heifers at 16 months saw £1385.

NOTICE

If you would like your stock to be included in the weekly report presale, please contact the office before 12 noon on Monday.

NOTICE

To ensure your entries are listed in the Saturday Store Sale Catalogue, please book in your stock by 4pm on Friday.

Smallholders - Auctioneer Richard Spendlove

A busy monthly Smallholders Sale with just under 1000 lots on offer.

A small entry of **Hatching Eggs** saw strong demand topping at £18 for 6 Peafowl eggs; Turkey eggs popular to £11 for 6; Lavandar Pekins £10 for 15; Light Sussex Bantam's £10 a dozen. A seasonal entry of **Produce**, New Potatoes £6 a box from £5; Punnets of Plums £2.50 from £2; Apples £1 a punnet; Beef Tomatoes 50p each.

The recent rain brought some more optimism to the **Plant** section. Herb Planters £7; Marigolds £1 each; Ceanothus £6 each; Lavendar to £6 for 4; New Guinea Impatiens £5 for 3; Begonia £3.50 for 2; Dahlia £4.50; Cyclamen £8; Fruit Trees £12.

As always something for everyone in the **Sundries** section, incorporating two dispersal sales saw some quality items entered. Ironworks Sheep Turnover Crate £460; Sheep Creep Feeder £260; Alko Farmer Scythe £250; 16m x 9m Safety Net £120; Chicken Coops to £100; Toro Lawn Mower £90; Sheep Hurdles £23 each from £10; Sheep Shedding Gate £70; Footbaths to £56 from £30; Compressors £25 to £35; Chainsaws £40 from £10; Electric Fence stakes £22 for 10; Ladders £20; Scales £32; Plastic Sheep Troughs £45; Lister Shearing Machine £45; Small Water Trough £35; Milk Churn £25; Garden Ornaments £10 to £30; Gazebo £20; Sheep Branding Numbers £18; Trolley £35; Garden Trailer £65. Plenty of miscellaneous boxes, tools, screws nuts and bolts £20 from £1.

Next Sale - 6th September. Reminder that all lots must be in the Market no later than 9am to allow us to start on time at 9.30am.

NOTICE

Harry Robinson of Milton Ernest in Bedfordshire died peacefully on 24th July 2025 aged 94 after a long and happy life. Farming and family were his life. His funeral is on Monday 18th August 2025 at 1pm being held at All Saints Church, Milton Ernest, Bedfordshire. Everyone Welcome.

NOTICE

Please ensure Entry Forms and all relevant paperwork accompany your entries when bringing livestock into the Market.

Entry Forms can be found on our Website, in the Market Office or alternatively please contact the Main Office.

SATURDAY 2ND AUGUST

CALVES

J E G James

2 British Blue Bulls
1 British Blue Heifers
1 Angus Heifer

All 2-3 Weeks

GOATS

R P Webb

1 British Alpine Nanny with Billy Kid at Foot
1 Alpine x Doeling
1 Alpine Billy Kid

5 Years & 5 Months
5 Months
5 Months

STORE & BREEDING SHEEP

R & S Garley

50 Texel x Store Lambs

J L Spendlove

25 Blue Texel x Store Lambs

KEYSOE RC HORSE SHOW

Sunday 10th August 2025

Forty Foot Farm, Chapel Lane, Souldrop, Beds. MK44 1HB
WhatThreeWords: broke. Lamps.thumb

Open to all - for further information please
use the link below.

[https://www.myridinglife.com/
eventdetails.aspx?id=518511](https://www.myridinglife.com/eventdetails.aspx?id=518511)

KEYSOE
RIDING CLUB

Our chaplain Rev. Eddie Smith, Church of England Minister, member of the Agricultural Chaplains Association and the Farming Community Network will be in attendance at the market on the 1st & 3rd Saturday each month for a chat, if you would like to talk.

eddie.smith@talk21.com

Bletsoes

— EST. 1881 —

COLLECTIVE MACHINERY & EQUIPMENT SALE

Thrapston Auction Centre
Haldens Parkway
NN14 4QT

Wednesday 27th August at 10.30am

For Entry Forms please visit our website
Or Contact the Main Office on 01832 732241

Important, entries must be returned by
Sunday 17th August to be included in the catalogue

Auctioneer in Charge: Jake Wagstaff 07487 526803

Agricultural & Development
Consultants, Chartered Surveyors,
Auctioneers & Estate Agents

www.bletsoes.co.uk

01832 736757

Bletsoes

— EST. 1881 —

An Auction



Saturday 30th August at 1.00pm

***At Thrapston Livestock Market
Market Road, Thrapston. NN14 4JU***

Entries by Monday 18th August

NO entries will be accepted after this date

For further information contact Beth Kitchener 07736 143630

Agricultural & Development
Consultants, Chartered Surveyors,
Auctioneers & Estate Agents

www.bletsoes.co.uk

01832 736757

Riverside Meadow, Oundle Road, Barnwell

In all about 39.36 acres (15.93 hectares)



For Sale as a Whole

Guide Price - £350,000

- Currently divided into two river meadows
- Connected to mains water supply with trough in western field
- Offered for sale with vacant possession
- Sporting, fishing, mineral and timber rights are included in the Freehold title, insofar as they are owned

01832 732241 www.bletsoes.co.uk

Bletsoes, Oakleigh House, Thrapston, Northamptonshire, NN14 4LJ

Bletsoes
— EST. 1881 —

Contact George Pullin 07487 526887

Bletsoes

— EST. 1881 —

FOR SALE

BY PRIVATE TREATY

Bolker Cottage , Thorney, Peterborough, PE6 0UD

A fantastic **self-build opportunity** with full planning permission for the erection of a large single dwelling and triple-bay garage.



Front Elevation

Bolker Cottage presents a truly unique single development opportunity. Located off Thorney Dyke, to the north of the village of Thorney, nestled amongst the fens, the site provides the perfect balance between rural charm and modern convenience. Thorney is a village situated off the A47 between Peterborough and Wisbech in the jurisdiction of Peterborough City Council.

The detailed planning permission allows for the creation of a 2,789 sq ft (259.1 m2) two-storey four-bedroom dwelling. The Planning permission has also been implemented.

The accommodation is arranged over the following:

Ground Floor 138.8 M2

First Floor 120.3 M2



Rear Elevation



Garage

Offers in Excess of £900,000

Agricultural & Development
Consultants, Chartered Surveyors,
Auctioneers & Estate Agents

www.bletsoes.co.uk

01832 736757

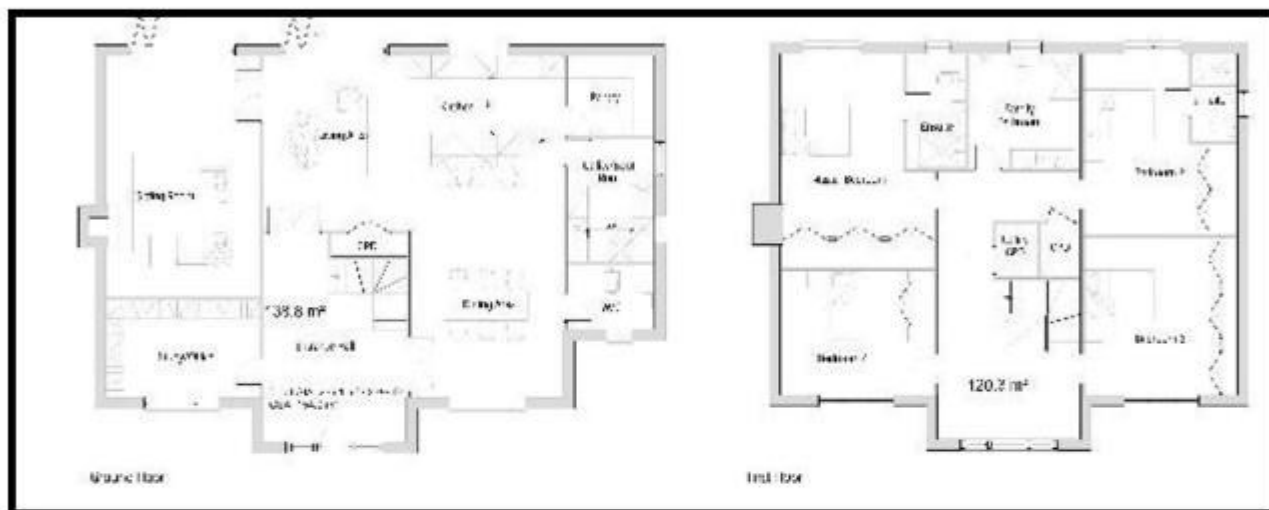
Bletsoes

— EST. 1881 —

FOR SALE

BY PRIVATE TREATY

Bolker Cottage , Thorney, Peterborough, PE6 0UD



For more details, please
contact Will Simpkins

Will Simpkins
will.simpkins@bletsoes.co.uk

Agricultural & Development
Consultants, Chartered Surveyors,
Auctioneers & Estate Agents

www.bletsoes.co.uk

01832 736757

Land at Holland Fen

**Approximately 155.10 ACRES (62.76 hectares)
of Commercial Arable Land**



For Sale as a Whole or in up to 2 Lots

- Prime arable land providing good sized and level fields suitable for a range of cropping
- Offered for sale - vacant possession on 10th October 2025
- Sporting, mineral and timber rights are included in the sale, insofar as they are owned

01832 732241 www.bletsoes.co.uk

Bletsoes, Oakleigh House, Thrapston, Northamptonshire, NN14 4LJ

Bletsoes
— EST. 1881 —

Contact George Pullin 07487 526887

9TH AUGUST 2025

CHARITY EVENT

SCAN THE QR CODE TO PURCHASE TICKETS

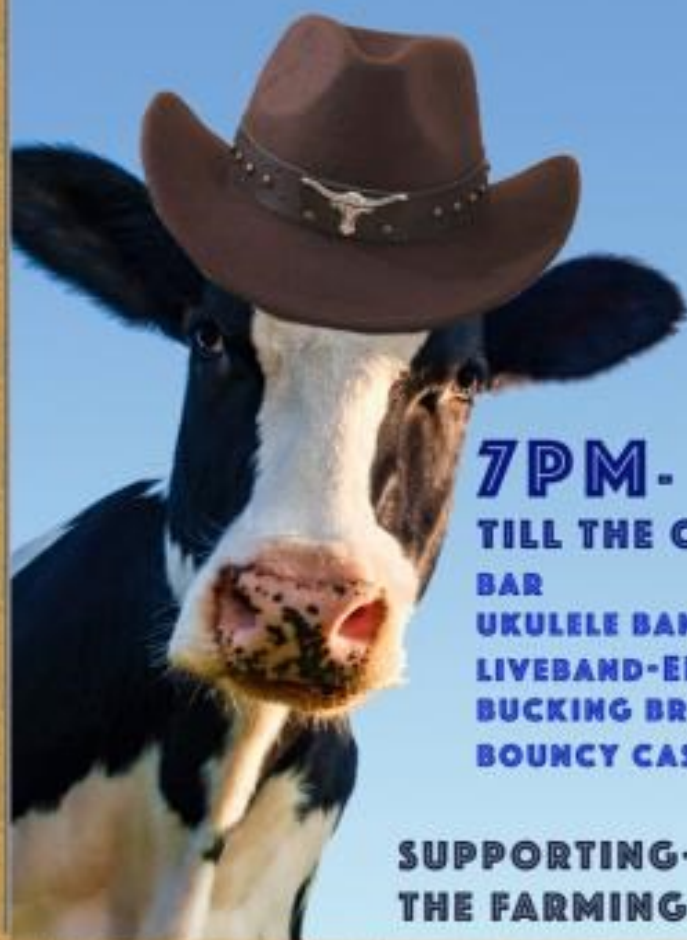


PARTY
TILL THE COWS
COME HOME 2!!!

£ 35 PER HEAD INC HOG ROAST
UNDER 16 £15 , UNDER 8'S FREE

PARTY AT:

CARVELLS
HOME FARM
NASEBY
NN6 6DH



7PM-

TILL THE COWS COME HOME..MOOI

BAR

UKULELE BAND

LIVEBAND-EMPIRE

BUCKING BRONKO

BOUNCY CASTLE

SUPPORTING- ALZHEIMERS SOCIETY
THE FARMING COMMUNITY NETWORK

Breeding Sheep & Ram Sales

Saturday 16th August

Catalogue Entry Deadline – Wednesday 6th August

Saturday 13th September

Catalogue Entry Deadline – Wednesday 3rd September

**Please contact us with your entries,
for cataloguing & advertising purposes.**

Entry forms can be found on our Website or Market Office

Jake Wagstaff 07487 526803 / Beth Kitchener 07736 143630

market@bletsoes.co.uk